

2024



The Kalahavi

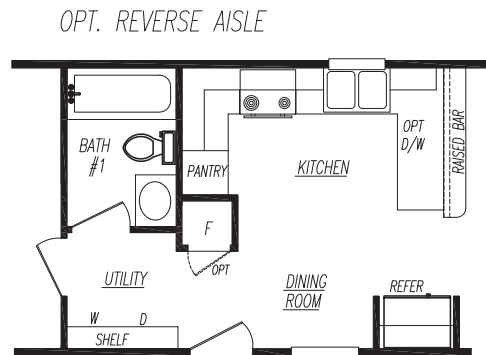
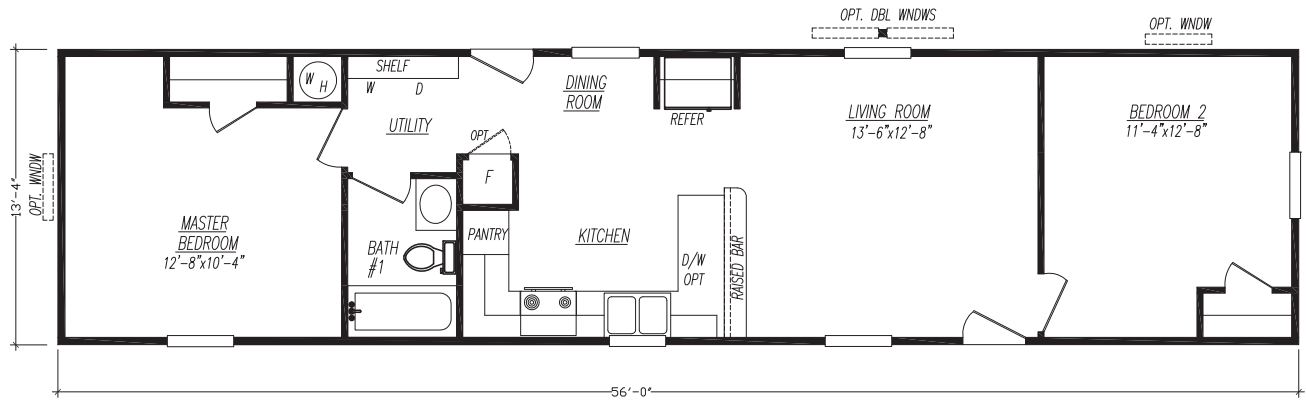
Single & Sectional Series



Welcome to Adventure Homes. We offer you the best value in manufactured housing in today's market. Our homes are built with unbelievable eye appeal and standard features that are above and beyond HUD code. Additionally, we offer award winning sales, service and production teams to enhance your value even more. **We look forward to assisting you and welcoming you into our family of satisfied retailers and customers!**

Model 2562Z-KH

2 Bedroom • 1 Bath • Floor Size 747 sq. ft.



Every home built by Adventure is constructed with premium materials in a climate-controlled enclosed building facility. This helps eliminate weather-damaged building supplies and weather-related delays. These state-of-the-art facilities ensure precise and quality construction. All Adventure homes meet, and in many cases exceed, HUD code.

Adventure Homes Kalahari Series is standard with Pre-Determined Interior Decor Choices.

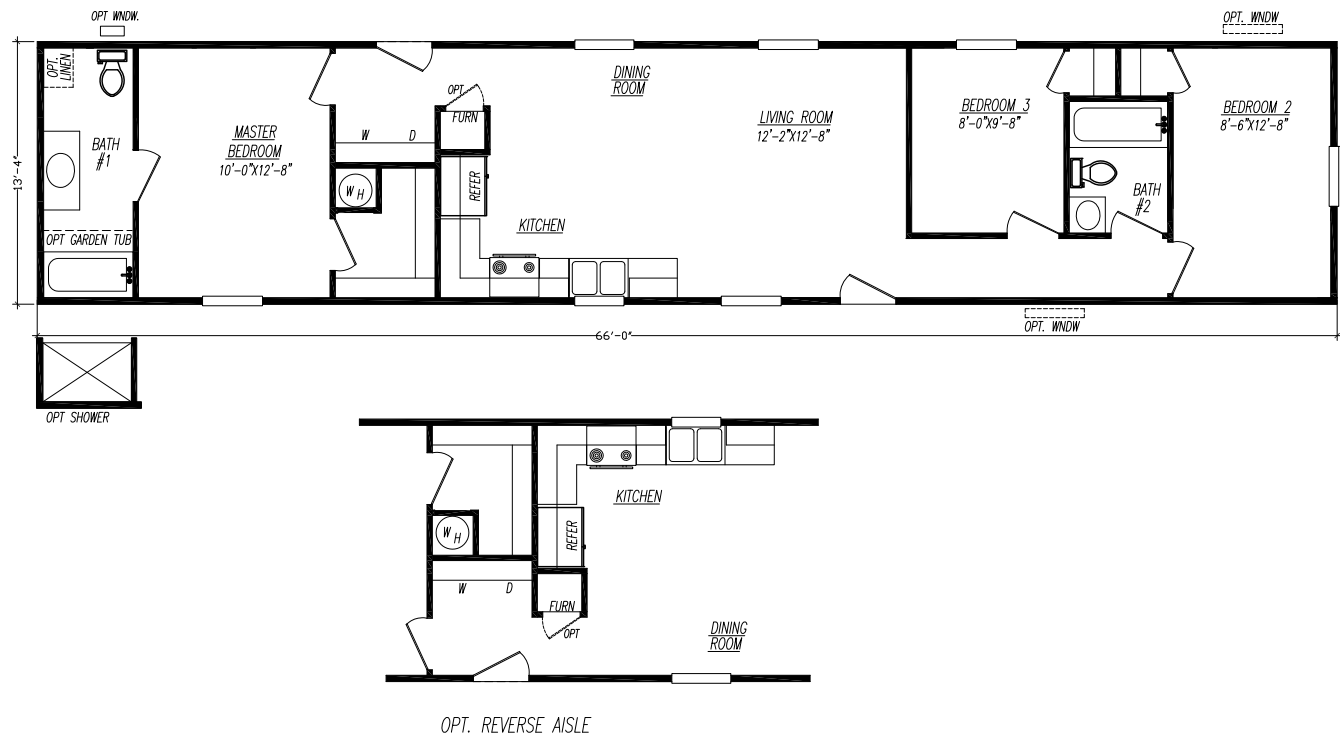
Model 2602A-KH

2 Bedroom • 2 Bath • Floor Size 800 sq. ft.



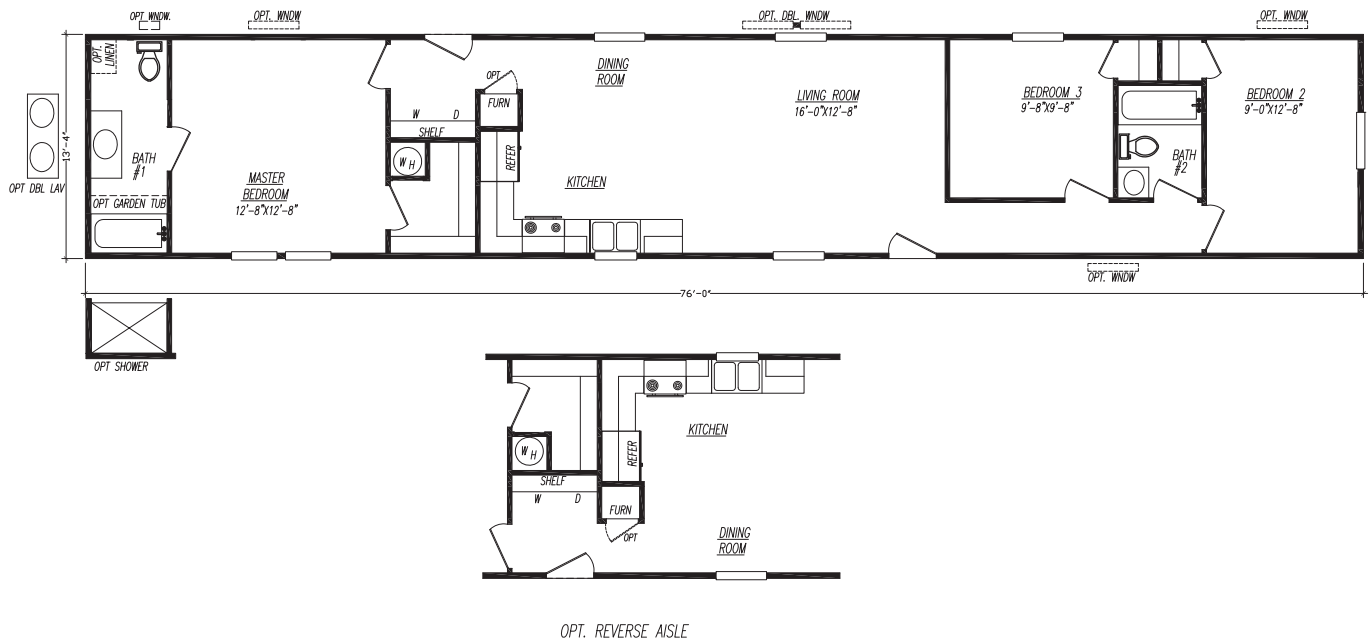
Model 2663F-KH

3 Bedroom • 2 Bath • Floor Size 880 sq. ft.



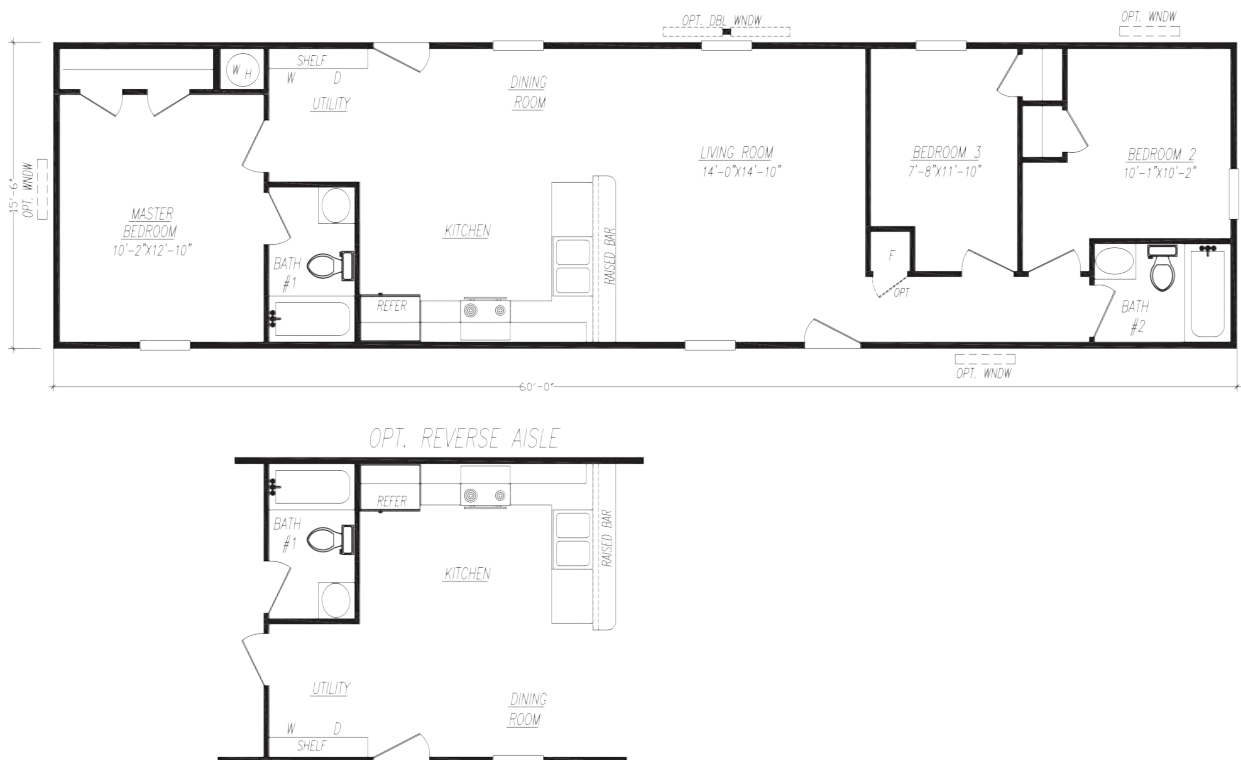
Model 2763D-KH

3 Bedroom • 2 Bath • Floor Size 1,014 sq. ft.



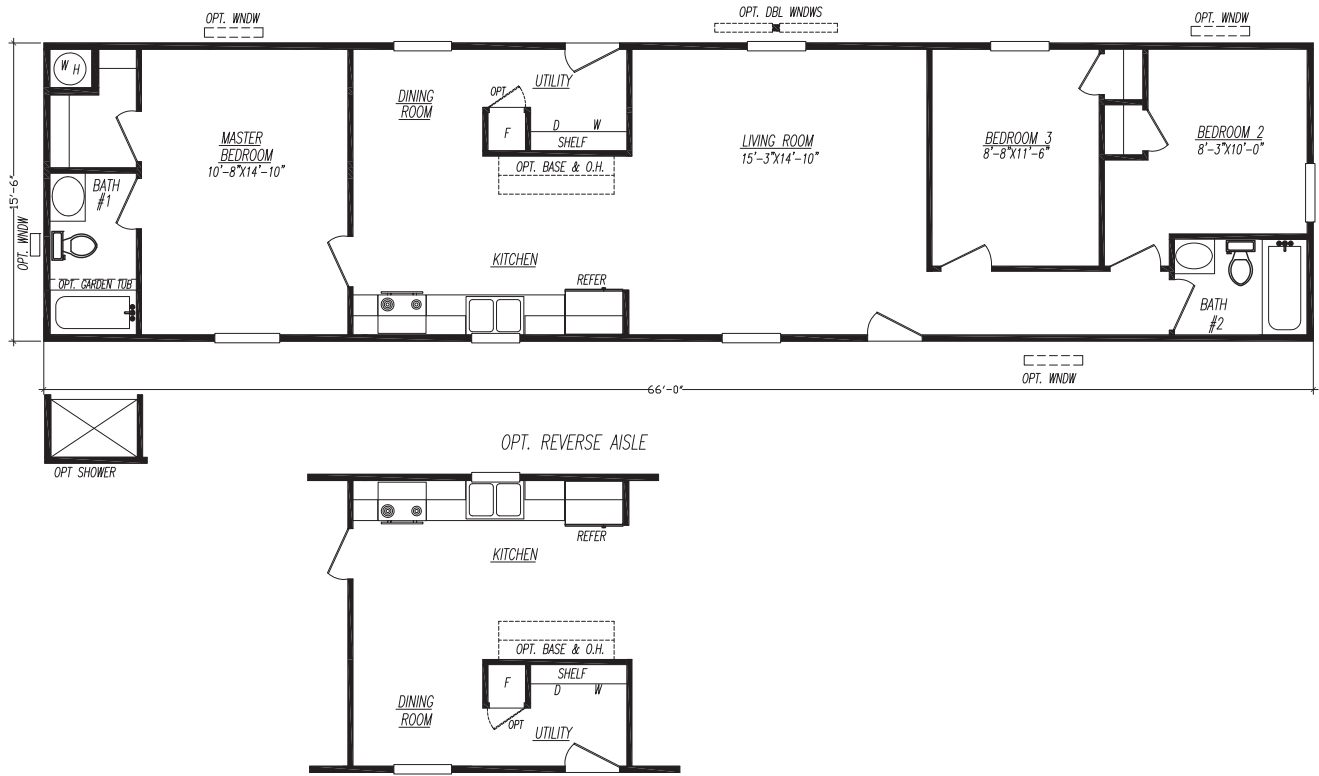
Model 6603U-KH

3 Bedroom • 2 Bath • Floor Size 930 sq. ft.



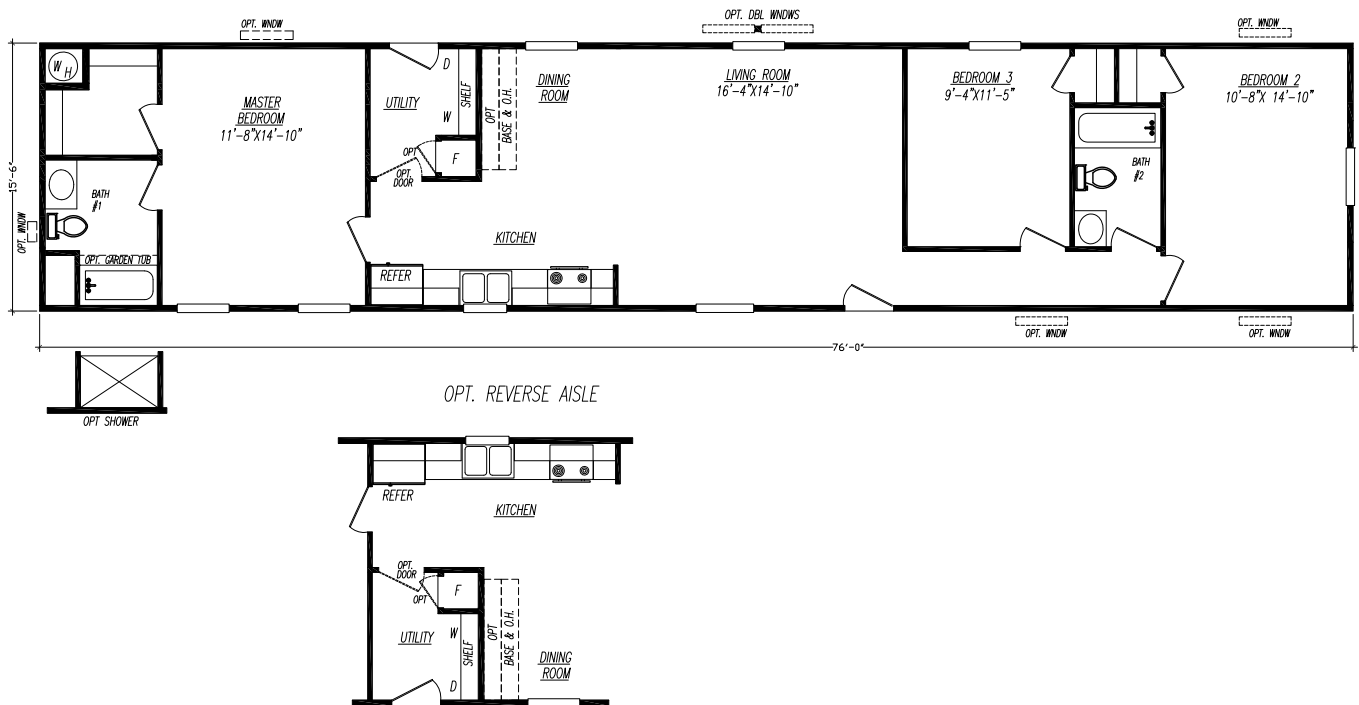
Model 6663X-KH

3 Bedroom • 2 Bath • Floor Size 1,023 sq. ft.



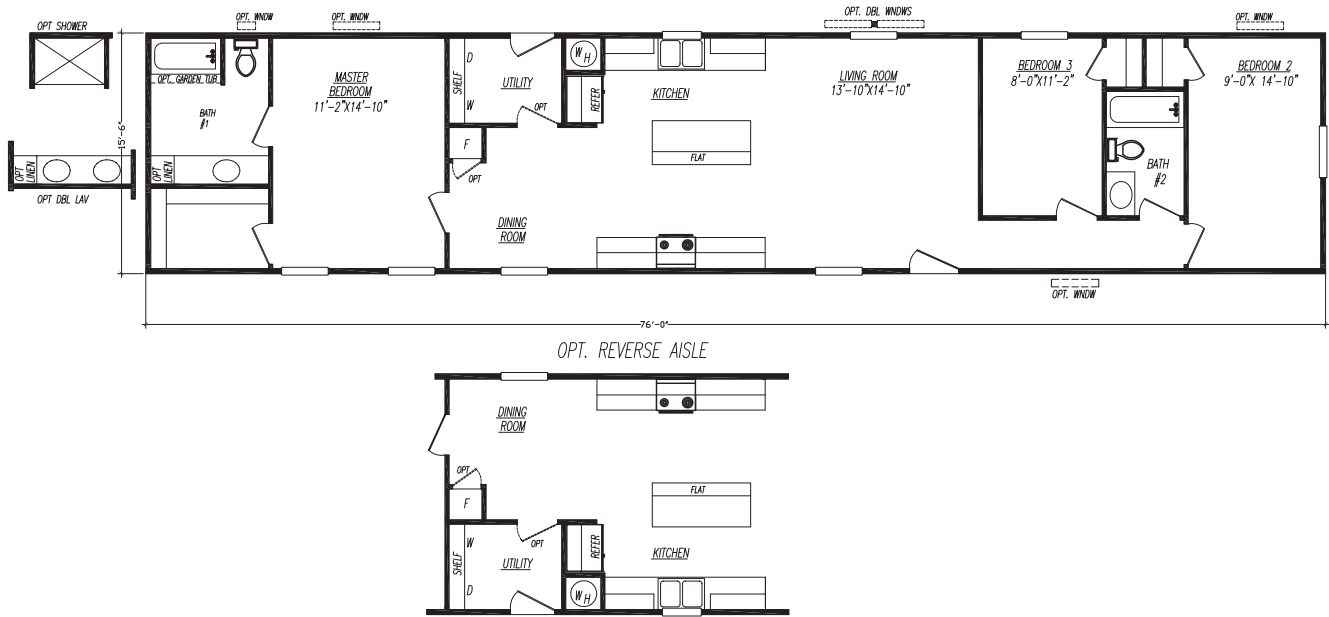
Model 6763B-KH

3 Bedroom • 2 Bath • Floor Size 1,178 sq. ft.



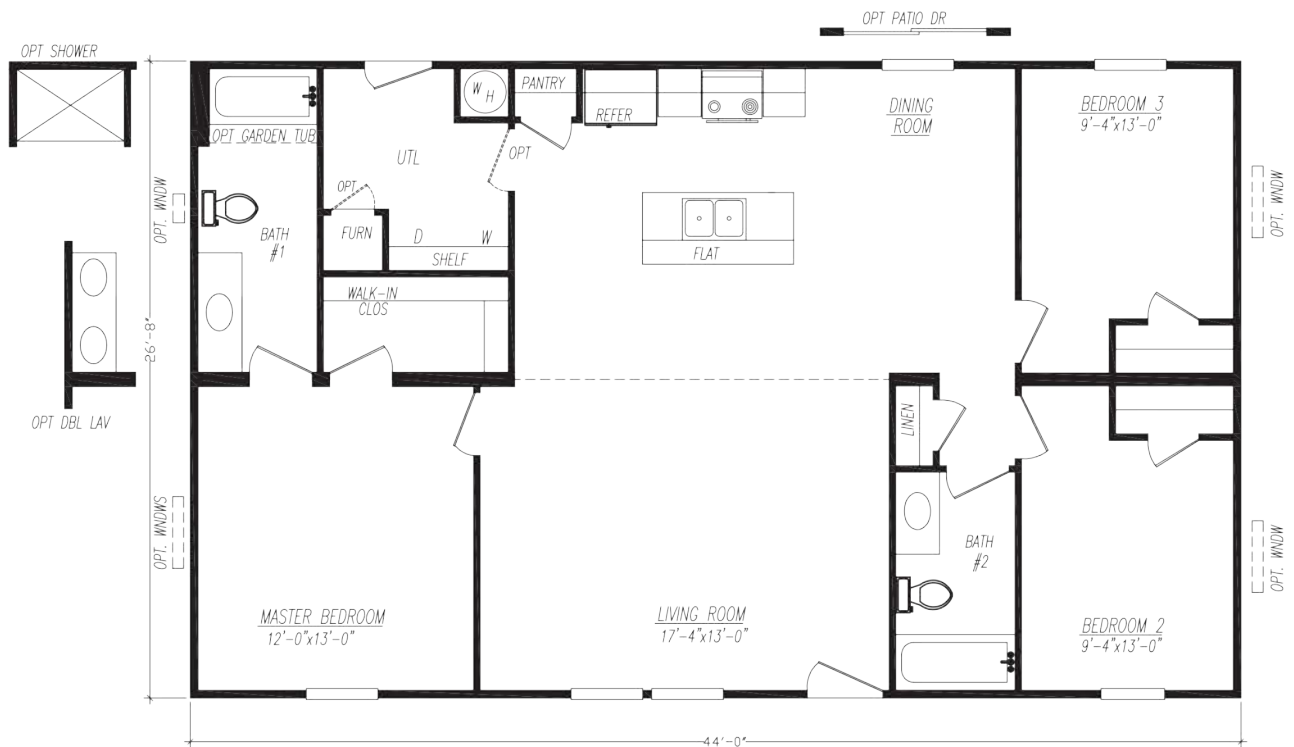
Model 6763M-KH

3 Bedroom • 2 Bath • Floor Size 1,178 sq. ft.



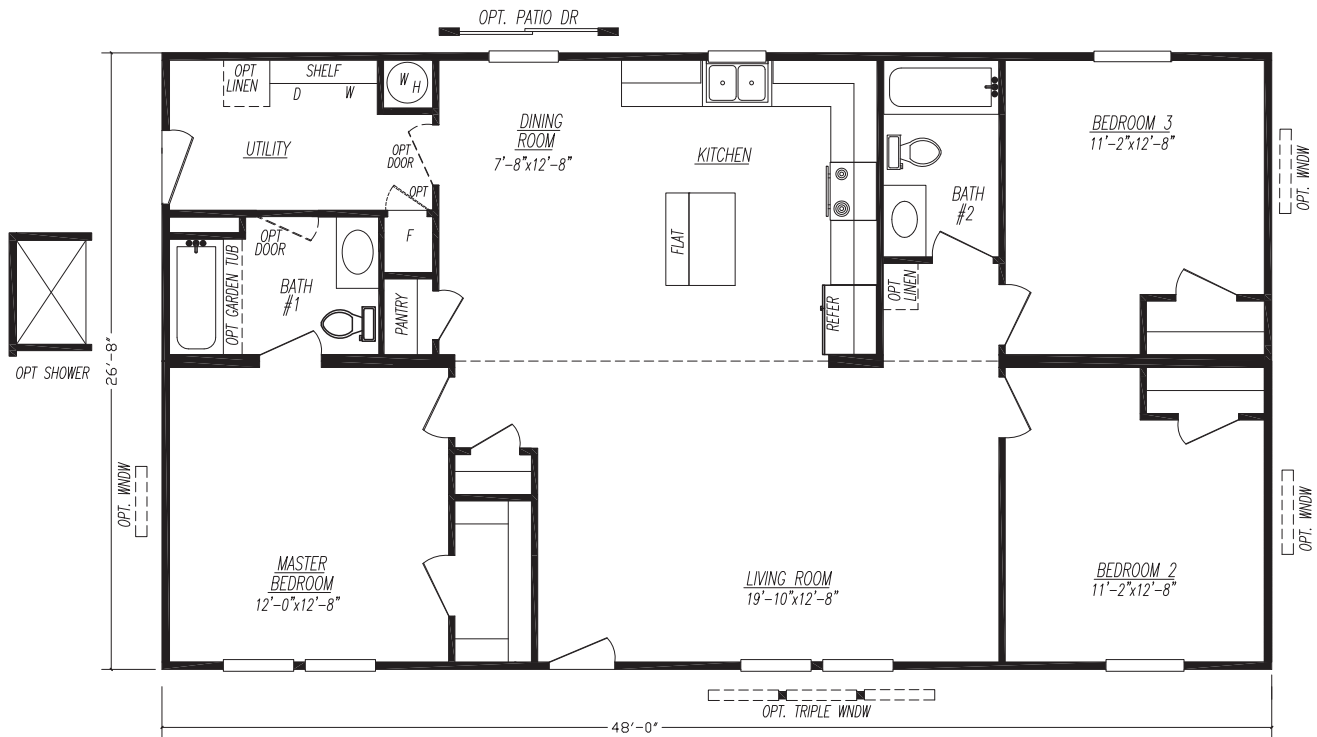
Model 4443X-KH

3 Bedroom • 2 Bath • Floor Size 1,174 sq. ft.



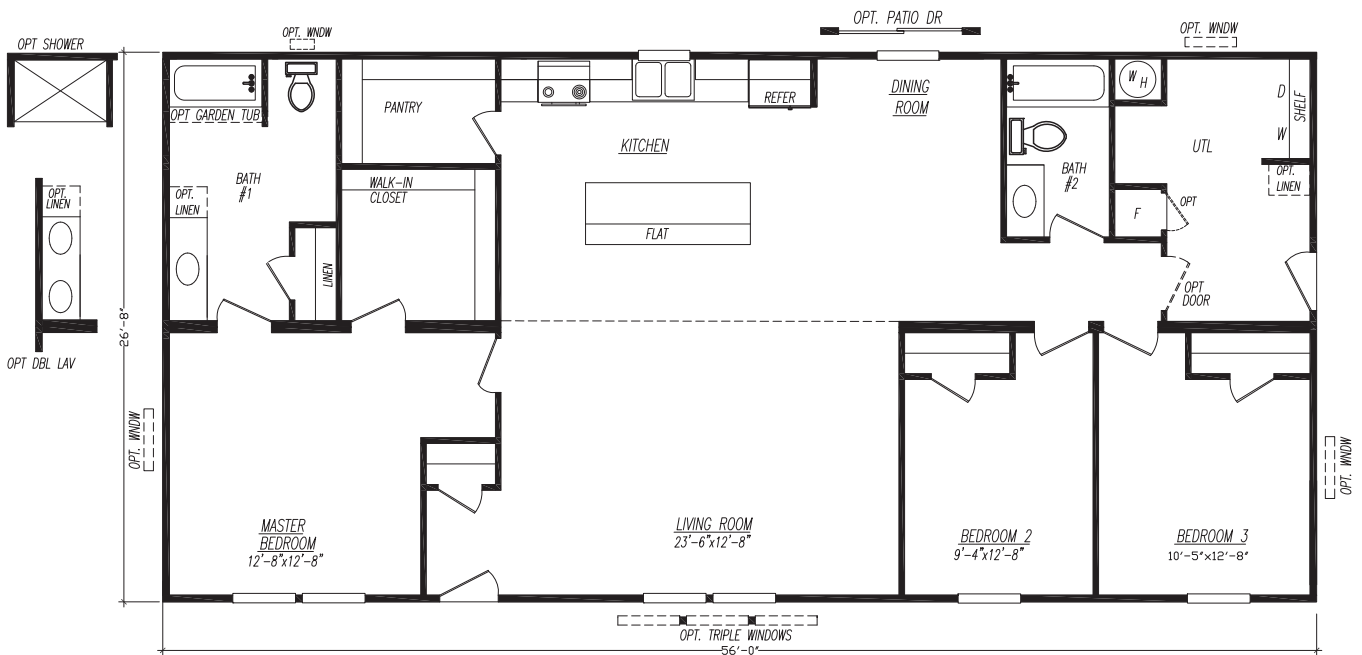
Model 4483M-KH

3 Bedroom • 2 Bath • Floor Size 1,280 sq. ft.



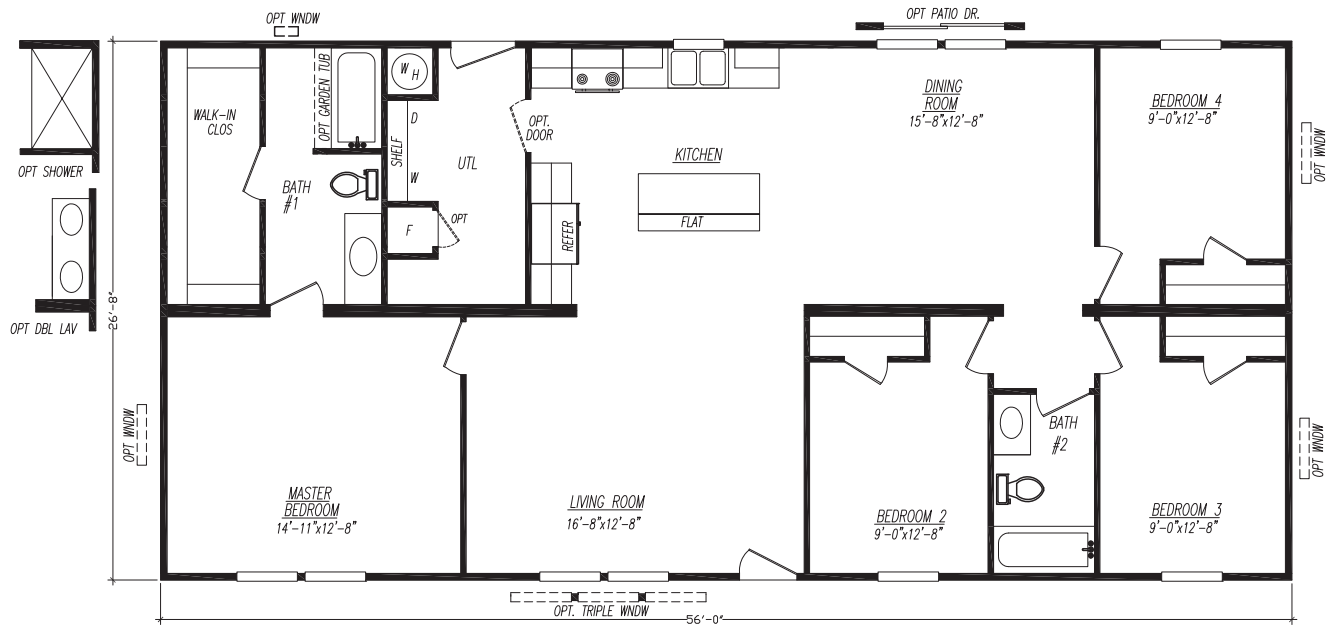
Model 4563T-KH

3 Bedroom • 2 Bath • Floor Size 1,494 sq. ft.



Model 4564X-KH

4 Bedroom • 2 Bath • Floor Size 1,494 sq. ft.



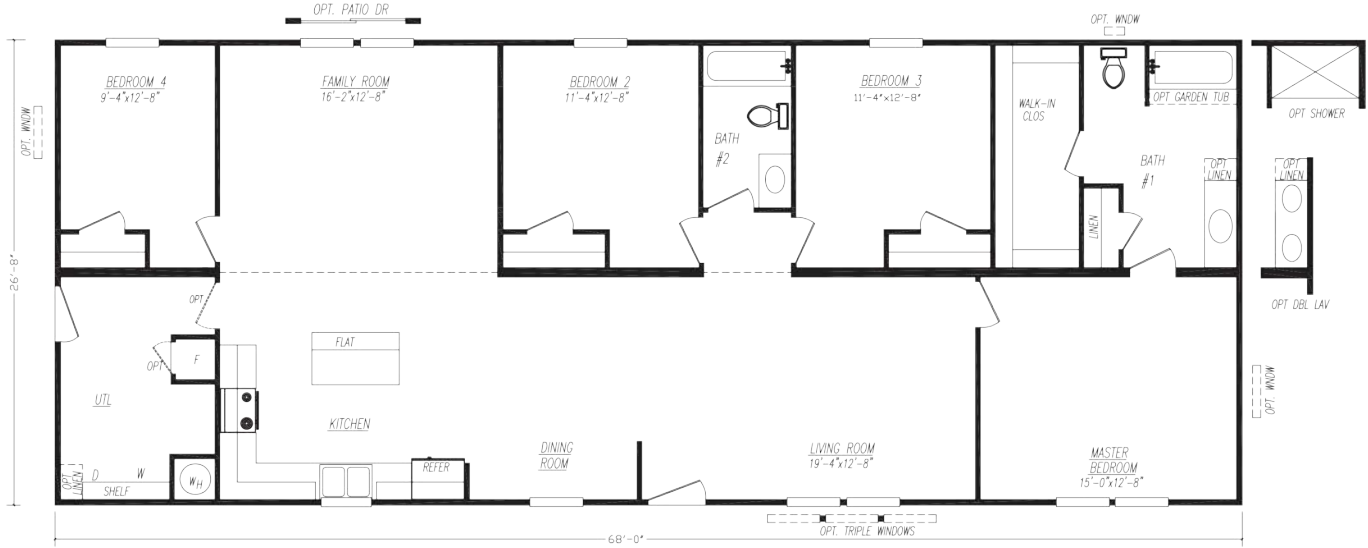
Model 4604A-KH

4 Bedroom • 2 Bath • Floor Size 1,600 sq. ft.



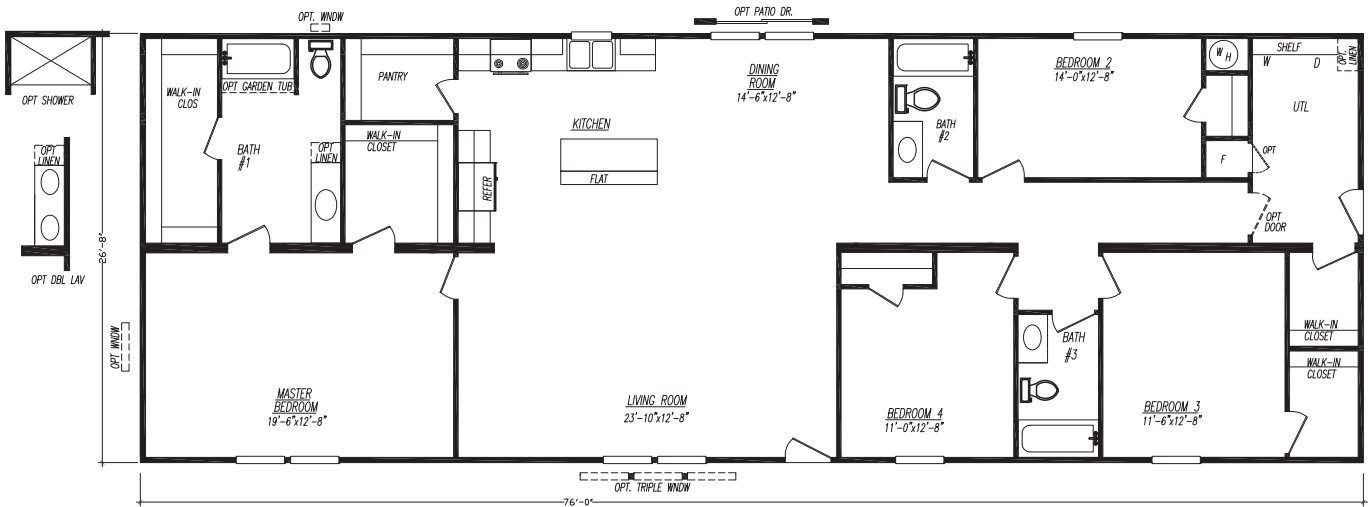
Model 4684L-KH

4 Bedroom • 2 Bath • Floor Size 1,814 sq. ft.



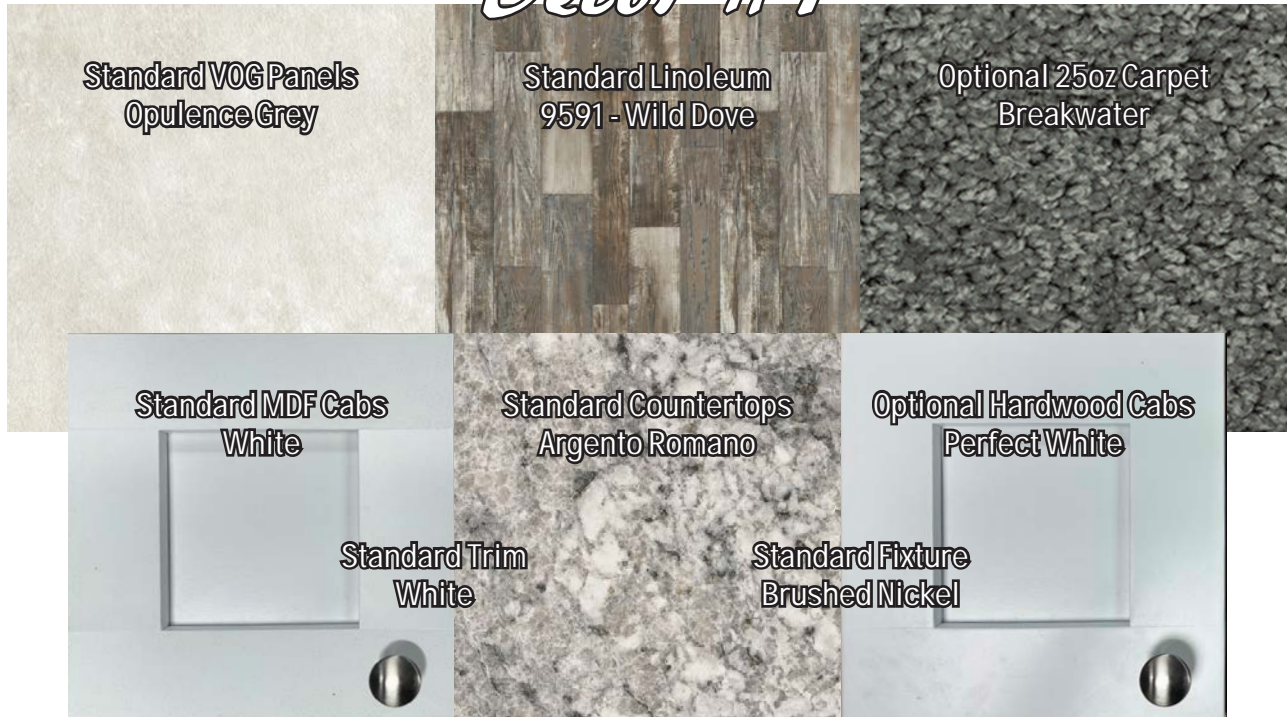
Model 4764H-KH

4 Bedroom • 3 Bath • Floor Size 2,027 sq. ft.



Available Decor Selections

Decor #1



Decor #2



Available Options

- Black Appliance Package #1**
Microwave, Dishwasher, 18cf O/U Refer, Coil Top Electric Range
- Black Appliance Package #2**
Microwave, Dishwasher, SxS Refer, Coil Top Electric Range
- Black Appliance Package #3**
Microwave, Dishwasher, 18cf O/U Refer, Smooth Top Electric Range
- Black Appliance Package #4**
Microwave, Dishwasher, SxS Refer, Smooth Top Electric Range
- Black Appliance Package #5**
Microwave, Dishwasher, 18cf O/U Refer, Deluxe Gas Range
- Black Appliance Package #6**
Microwave, Dishwasher, SxS Refer, Deluxe Gas Range
- Stainless Steel Appliance Package #4**
Microwave, Dishwasher, SxS Refer, Smooth Top Electric Range
- Stainless Steel Appliance Package #6**
Microwave, Dishwasher, SxS Refer, Deluxe Gas Range
- Finished Base & Center Shelf w/ Fixed Overhead Shelf**
- Solid Cabinet Doors & Solid Cabinet Stiles**
- Cabinet over Refrigerator**
- 2" MDF Stile Cabinet Cove**
- 3 Door Linen (where available)**
- Overhead Cabinets above Washer & Dryer (24" tall)**
- Optional Base & Overhead Cabinets (where available)**
- Black Dishwasher**
- Stainless Steel Dishwasher**
- Black Microwave Over Range**
- Stainless Steel Microwave Over Range**
- Black Smooth Top Electric Range ilo Black Coil Top**
- Stainless Steel Smooth Top Electric Range ilo Black Coil Top**
- Black Deluxe Gas Range ilo Black Coil Top**
- Stainless Steel Deluxe Gas Range ilo Black Coil Top**
- Garbage Disposal**
- Add Ice maker to 18cf O/U Refrigerator**
- Black SxS Refrigerator ilo Black 18cf O/U**
- Stainless Steel SxS Refrigerator ilo Black 18cf O/U**
- 1"x4" Laminate Backsplash Throughout**
- Omit Standard Range**
 - Standard Electric Range Hookup
 - Plumb for Future Gas Range
- Omit Standard Refrigerator**
 - Plumb for Future Ice maker
- Plumb & Wire for Future Dishwasher**
- Wire for Future Microwave Over Range**
- Gas Furnace w/ 100 AMP Service**
 - 200 AMP Service
- Upgrade Panel Box (200 AMP service only)**
- 10 Wire Thermostat**
- Digital Thermostat**
- 40 Gallon Gas Water Heater ilo Electric**
- Plumb for Future Gas Dryer ilo Electric**
- Add Exterior Faucet**
- Add Exterior Receptacle (with approval)**
- Add Interior Receptacle (with approval)**
- 40 AMP A/C Disconnect**
- Wire & Brace for Ceiling Fan (capped off)**
- Ceiling Fan**
- Wire & Brace for Flat Screen TV**
 - Access for TV Wiring
- TV Jack**
- Phone Jack**
- Media Jack**
- 1pc Garden Tub / Shower (where available)**
- 54" Shower Stall (where available)**
- Double Bowl Vanity (where available)**
- Vanity Light above Bathroom Sink**
- Mirrored Medicine Cabinet**
- Towel Bar & Tissue Holders**
- Medicine Cabinet**
- Omit Standard Seams in Ceiling**
- Stomped Ceiling ilo Popcorn**
- Beamless Mateline**
- MDF Mateline Ceiling Beam**
- 6" Mateline Drop Header**
- 3" MDF Stile Cove & Casing**
 - Main Living Area
 - Throughout Home
- 2" Plastic Blinds Throughout**
- Hardwood Window Sills Throughout**
- Add 25oz Carpet (per room)**
 - Lino Entry
- Upgrade Oaksiding Siding**
- Upgrade Compass Siding**
- Add Shutters (per pair)**
- Add Window Lineal (per window)**
- Drop Starter Strip 3"**
- Raise Starter Strip 5"**
- Architectural Shingles ilo 3-Tab**
- Full Dormer (sectional)**
- Full Recessed Dormer (sectional)**
 - Shake Insert inside Recessed Dormer
- Clear Skies Exterior Hitch Treatment (single section)**
- 38"x82" 4 Lite Front Door (no storm)**
- 38"x82" 6 Lite Front Door (no storm)**
- 34"x82" 9 Lite Rear Door (no storm)**
- Full View Storm Door**
- Self-Storing Storm Door**
- Vinyl Sliding Glass Door (where available)**
- Optional Window (where available)**
- 14"x40" Privacy Bath Window (where available)**
- Tape & Foam around Windows**
- Add Interior Passage Door (where available)**
- Single Lever Interior Door Handles**
- White Metal Furnace Door**
- Foundation Ready Chassis**
- 30# Roof Load**
 - Alternate Frame for 30# Roof Load
- Adjustable Outriggers (per set)**
- 2x6 Wall w/ R-19 Insulation**
- R-22 Floor Insulation**
- R-33 Roof Insulation**
- Reverse Aisle (single section)**
- Mirror Image**
- End to End Flip**
- Mirror Image & End to End Flip**

Kalahari Series

Standard Features

Exterior

Thermal Zone III Construction
Nominal 3/12 Roof Pitch
R-28-11-11 Insulation
(Additional Windows & Doors May Require Higher Insulation Values)
Vinyl Siding
7/16" OSB Wrap under Vinyl Siding
Housewrap w/ Window Tape
3-Tab Fiberglass Shingles
7/16" OSB Roof Sheathing
Dead Bolt Locks at Front and Rear (Keyed Alike)
Vinyl Single Hung Windows w/ Grids - Low "E" w/ Argon
Foam All Exterior Windows
38"x 82" R.O. 6 Panel Residential Front Door (No Storm)
34"x 82" R.O. 6 Panel Residential Rear Door (No Storm)
2x6 Floor Joists 16" O.C. (12', 14', 24' & 28' Wide)
2x8 Floor Joists 16" O.C. (16' & 32' Wide)
20 LB Roof Load
2x4 Exterior Walls 16" O.C.
Jelly Jar Light Fixtures at All Exterior Doors
Full Length Chassis w/ Outriggers
99.5" I-Beam Spread, Detachable Hitch

Interior

Pre-Selected Interior Décor Choices
Door Stop All 3 Sides
94" Flat Ceilings
Blown Textured Ceiling w/ Seams
OSB Tongue & Groove Floor Decking
Vinyl Wall Panels Throughout
Flat Wrapped Moldings Throughout
Vinyl Flooring Throughout
Wire Closet Shelving
2 Panel White Interior Doors Throughout
Mortised Interior Door Hinges

Because of continuous product improvements, specifications
are subject to change without notice or obligation.

Electrical, Plumbing & Heating

Smoke Detectors in Main Living Areas &
All Bedrooms
200 AMP Service, Electric Furnace
40 Gallon Electric Water Heater
Exterior Electrical Receptacle (FDS)
Copper Wiring, PEX Plumbing
Whole House Shut-off Valve Underneath Home
Water Shut-off Valves (All Sinks & Commodes)
Metal Heat Ducts
GFI Receptacles in Kitchen and Baths
6" LED Can Lights Throughout
(Includes Living / Family Rooms)
Plumb & Wire for Washer & Dryer
Utility Shelf above Washer & Dryer

Kitchen

Black Electric Coil Top Range
Black 18cf Refrigerator
Black 30" Power Range Hood
30" Overhead Cabinets w/ Fixed Center Shelves
Shaker Style MDF Wrapped Cabinet Doors & Stiles
Concealed Cabinet Door Hinges
(1) Bank of Drawers w/ Residential Rails & Guides
Laminated Countertops
Stainless Steel Kitchen Sink
Nickel Gooseneck Faucet w/ Pulldown Sprayer
Cabinet over Range & Shelf over Refrigerator

Bath

1pc Tub Shower w/ Anti-Scald Single Lever Faucet
(Bath #1 and Additional Bathrooms)
Laminated Countertops
Mirror above Each Bathroom Sink
Power Exhaust Fan in Bathroom(s)
China "Water Saver" Commode in Bathroom(s)
White China Sink(s) w/ Single Lever Faucet(s)

ADVENTURE HOMES

www.AdventureHomes.net

1119 Fuller Drive, Garrett, IN 46738

877-510-1955



January
2024